

Lot S3, Eddington  
18/1195/REM

Application drawings

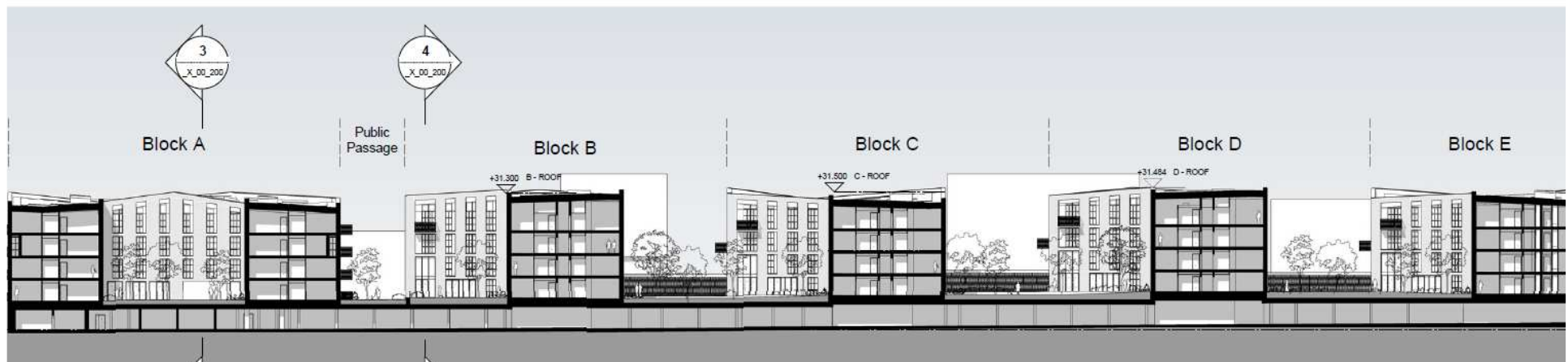
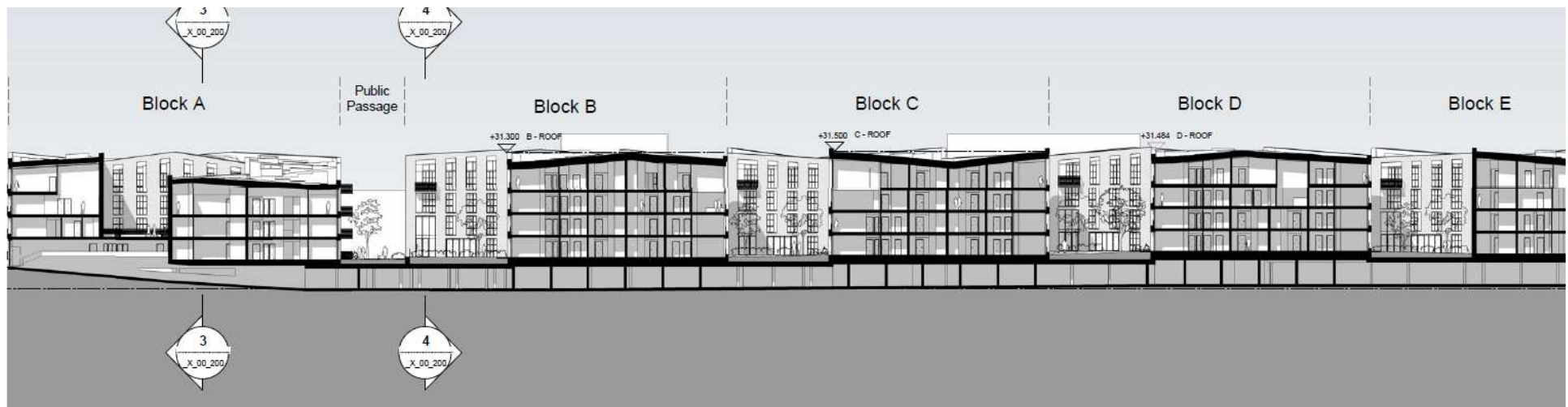
JDCC

20 March 2019





# Site sections





# Block A, ground floor

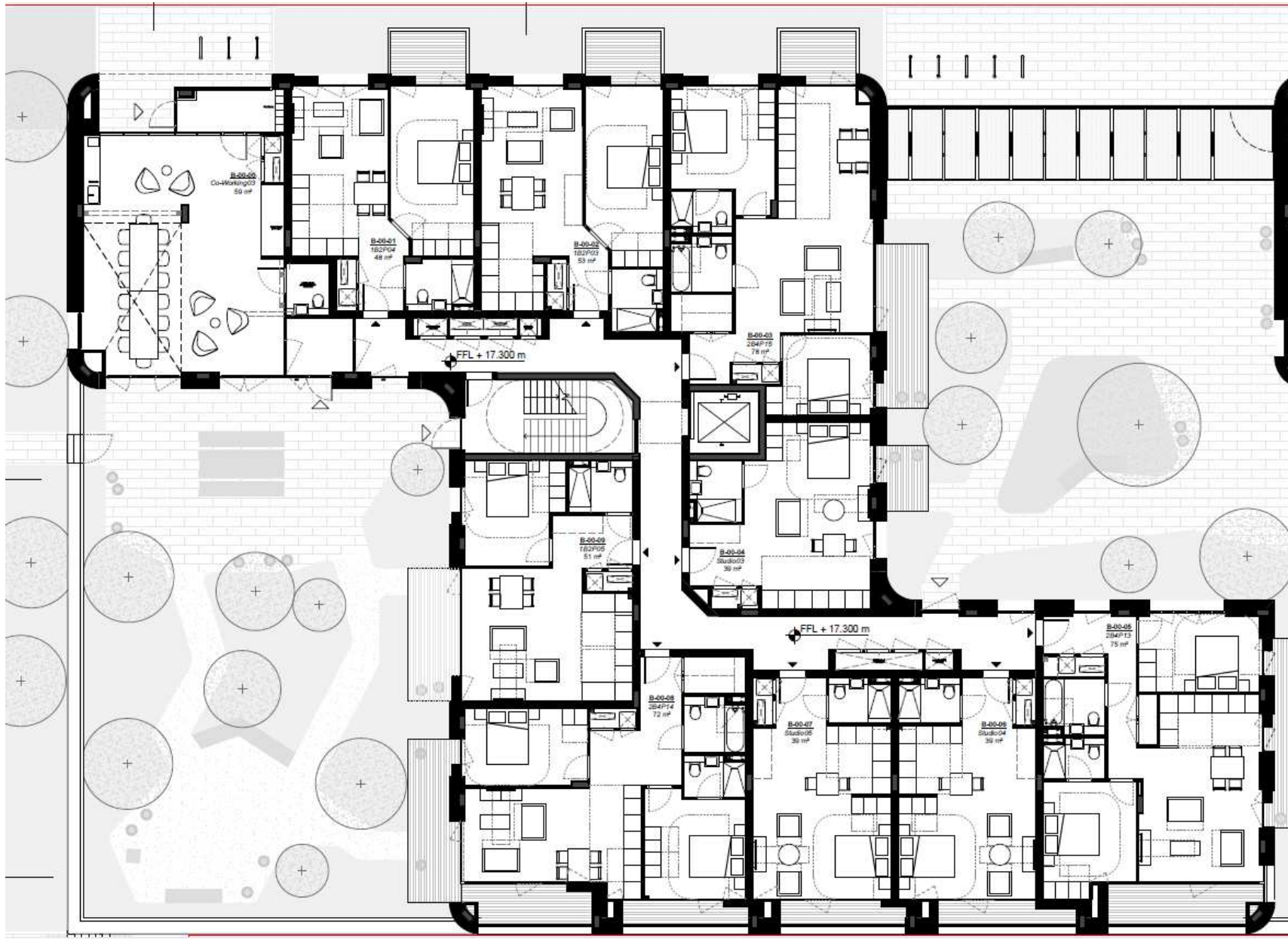


# Amended access ramp to north/south footway

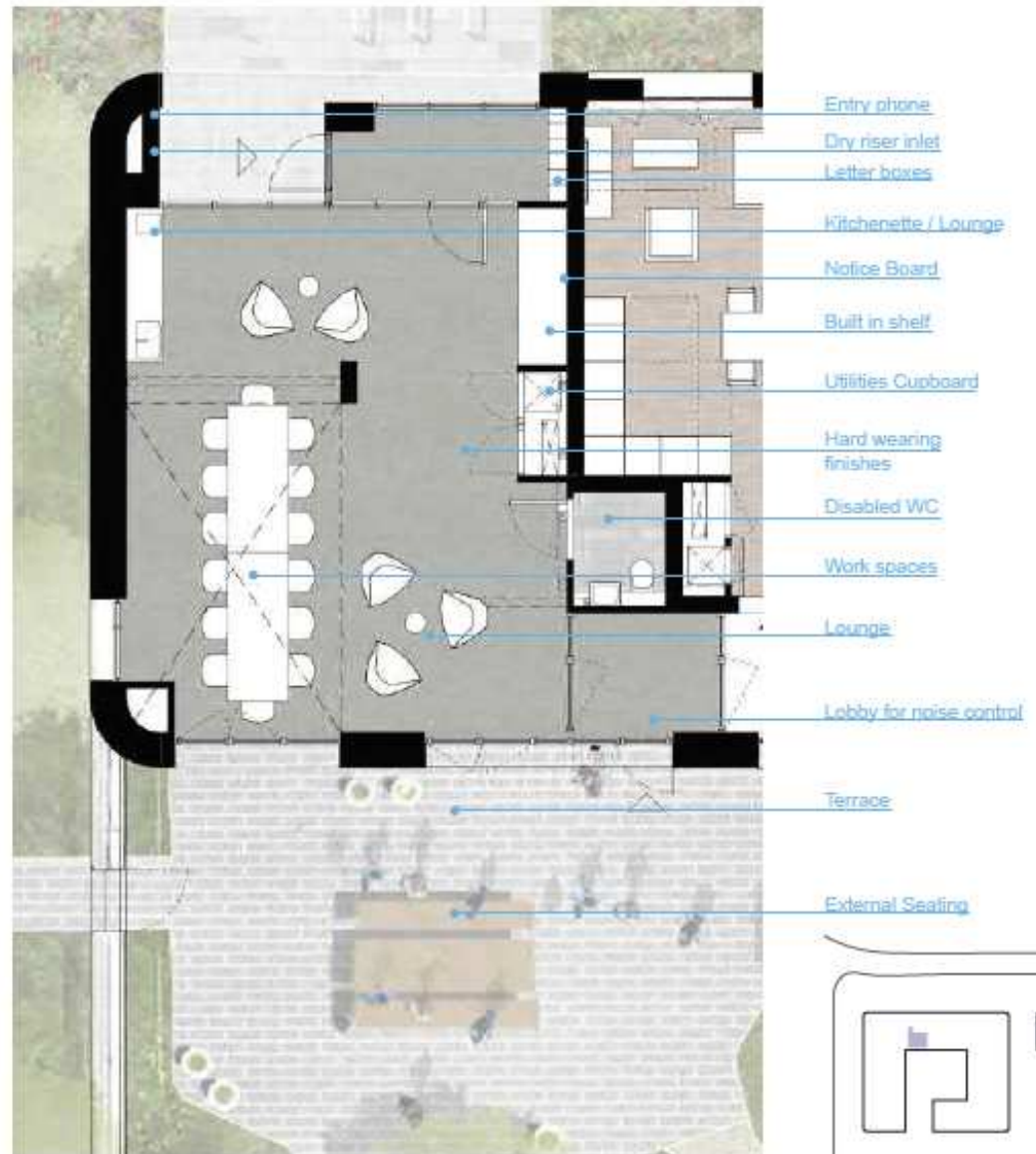




# Block B, ground floor

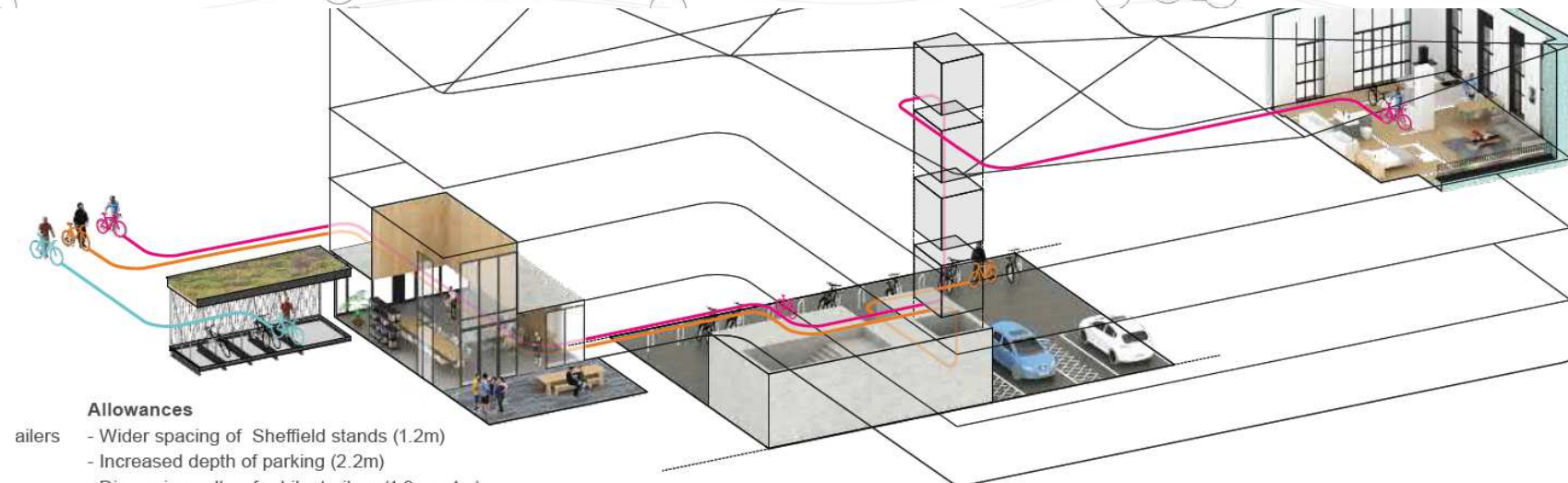
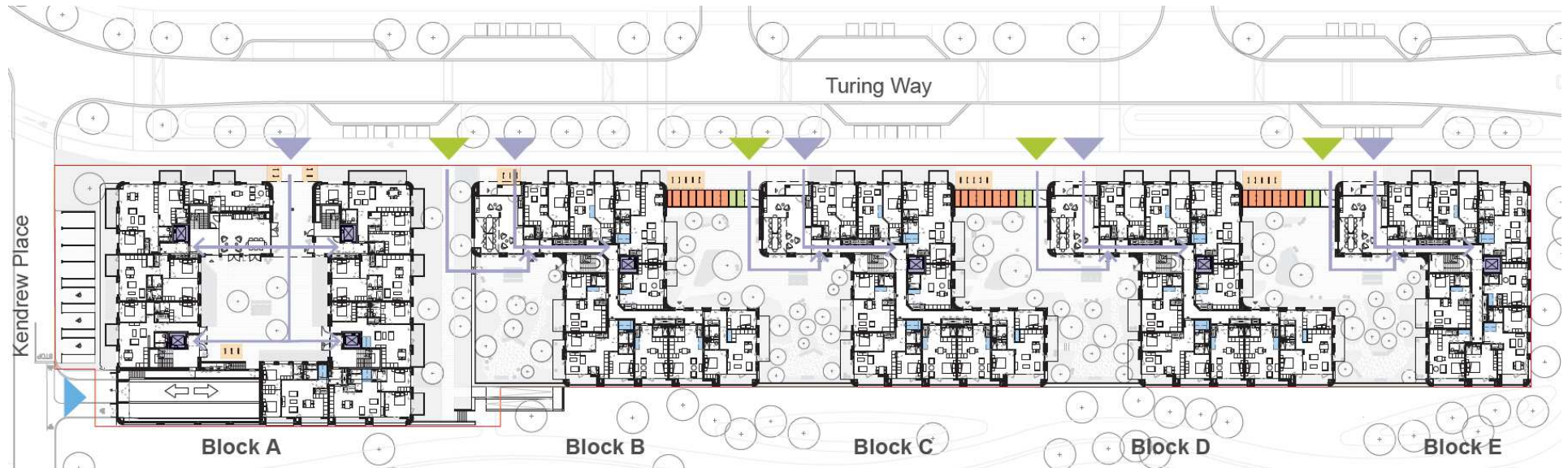


# Communal foyers





# Cycle strategy



## Allowances

- Wider spacing of Sheffield stands (1.2m)
- Increased depth of parking (2.2m)
- Dimensions allow for bike trailers (1.8m x 1m)

ices

## Basement Cycle Parking

- Dedicated areas within basement car park
- Access through basement ramp or through lift (1.85m x 1.4m lift car size)
- Including Cycle Washing Facility
- Including provision for off gauge bikes



# Cycle Pavilion design



# Verified View from the west

